

VOGUE COLLECTION



HERITAGE, BEAUTY, SERVICE

www.gaskell.co.uk

VOGUE - Chess



The design is the copyright of Gaskell Mackay Carpets Ltd. and may not be reproduced without their written permission. Due to the limitations of the printing process, we are unable to guarantee an exact colour reproduction of these designs. Gaskell Mackay reserve the right to change any of the specifications without prior notice. E.O.E.
© copyright Gaskell Mackay Carpets Ltd 2010.



HERITAGE, BEAUTY, SERVICE

VOGUE - Chess

Design ID: 5-M2253

- INFINITY DRIFTWOOD 
- INFINITY HEMP 
- INFINITY BLACK 
- INFINITY MOCHA 
- INFINITY CLARET 



This print represents 1m x 1m (Scale 1:6)

The design is the copyright of Gaskell Mackay Carpets Ltd. and may not be reproduced without their written permission. Due to the limitations of the printing process, we are unable to guarantee an exact colour reproduction of these designs. Gaskell Mackay reserve the right to change any of the specifications without prior notice. E.O.E.
© copyright Gaskell Mackay Carpets Ltd 2010.



HERITAGE, BEAUTY, SERVICE

VOGUE - Cobble





The design is the copyright of Gaskell Mackay Carpets Ltd. and may not be reproduced without their written permission. Due to the limitations of the printing process, we are unable to guarantee an exact colour reproduction of these designs. Gaskell Mackay reserve the right to change any of the specifications without prior notice. E.O.E.
© copyright Gaskell Mackay Carpets Ltd 2010.

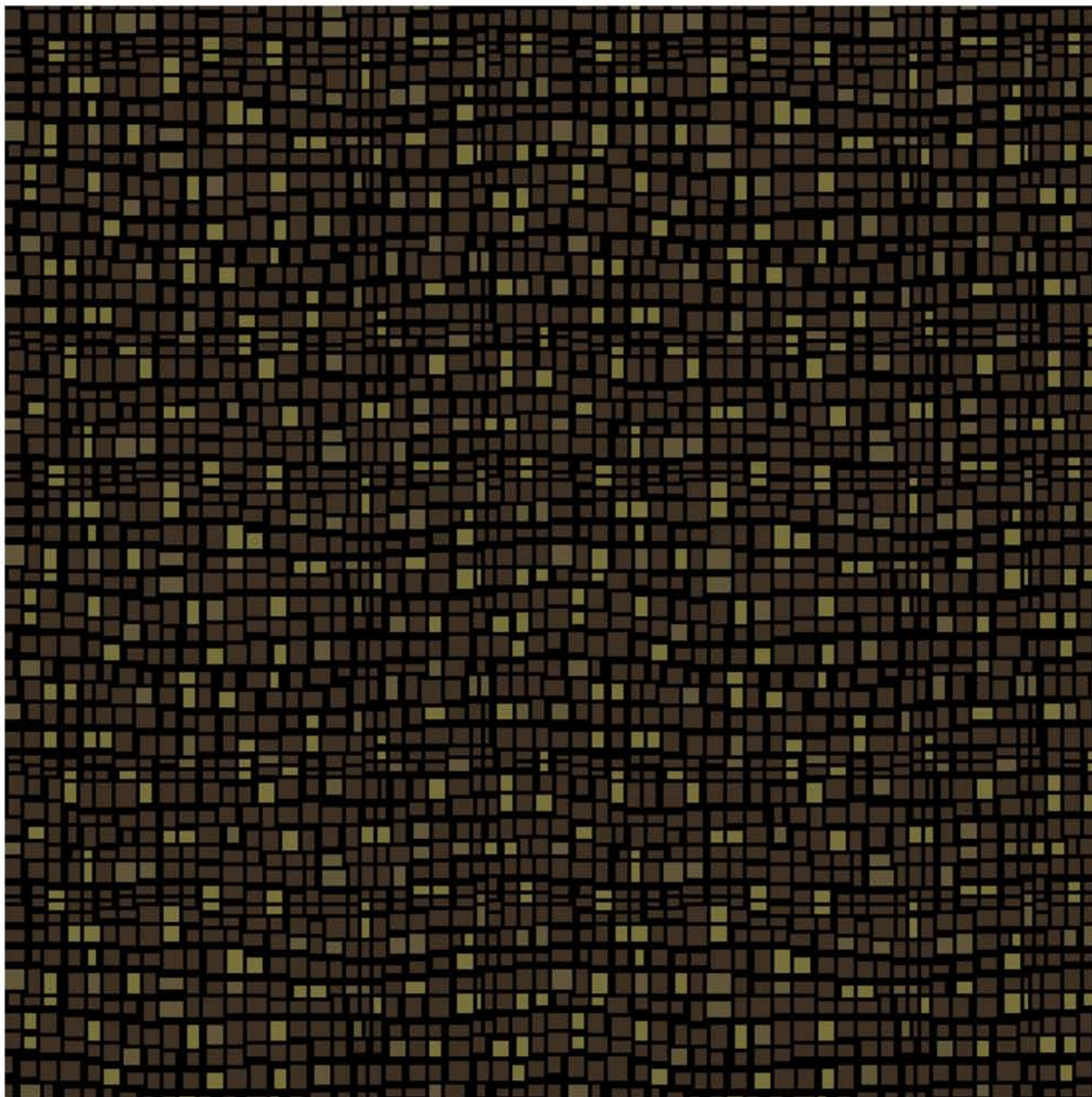


HERITAGE, BEAUTY, SERVICE

VOGUE - Cobble

Design ID: 20-MI575

INFINITY BLACK	
INFINITY MOCHA	
INFINITY HEMP	
INFINITY DRIFTWOOD	



This print represents 1m x 1m (Scale 1:6)

The design is the copyright of Gaskell Mackay Carpets Ltd. and may not be reproduced without their written permission. Due to the limitations of the printing process, we are unable to guarantee an exact colour reproduction of these designs. Gaskell Mackay reserve the right to change any of the specifications without prior notice. E.O.E.
© copyright Gaskell Mackay Carpets Ltd 2010.



HERITAGE, BEAUTY, SERVICE

VOGUE - Cord



The design is the copyright of Gaskell Mackay Carpets Ltd. and may not be reproduced without their written permission. Due to the limitations of the printing process, we are unable to guarantee an exact colour reproduction of these designs. Gaskell Mackay reserve the right to change any of the specifications without prior notice. E.O.E.
© copyright Gaskell Mackay Carpets Ltd 2010.

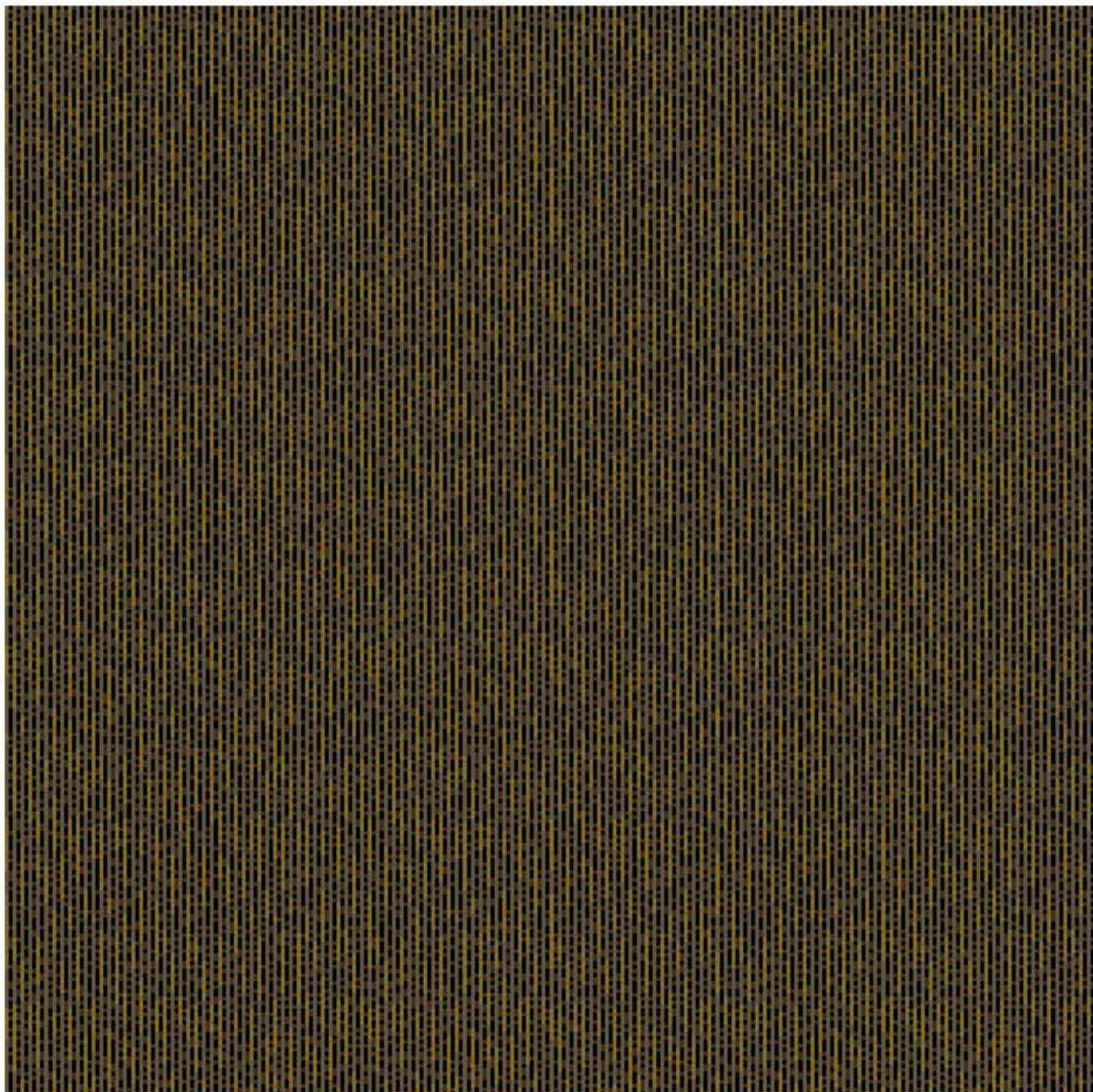


HERITAGE, BEAUTY, SERVICE

VOGUE - Cord

Design ID: I-M3615

- INFINITY DRIFTWOOD
- INFINITY BLACK
- INFINITY MOCHA
- INFINITY HEMP
- INFINITY NUTMEG



This print represents 1m x 1m (Scale 1:6)

The design is the copyright of Gaskell Mackay Carpets Ltd. and may not be reproduced without their written permission. Due to the limitations of the printing process, we are unable to guarantee an exact colour reproduction of these designs. Gaskell Mackay reserve the right to change any of the specifications without prior notice. E.O.E.
© copyright Gaskell Mackay Carpets Ltd 2010.



HERITAGE, BEAUTY, SERVICE

VOGUE - Dodgem



The design is the copyright of Gaskell Mackay Carpets Ltd. and may not be reproduced without their written permission. Due to the limitations of the printing process, we are unable to guarantee an exact colour reproduction of these designs. Gaskell Mackay reserve the right to change any of the specifications without prior notice. E.O.E.
© copyright Gaskell Mackay Carpets Ltd 2010.



HERITAGE, BEAUTY, SERVICE

VOGUE - Dodgem

Design ID: I-LDI706

INFINITY DRIFTWOOD
INFINITY MOCHA
INFINITY SAND



This print represents 1m x 1m (Scale 1:6)

The design is the copyright of Gaskell Mackay Carpets Ltd. and may not be reproduced without their written permission. Due to the limitations of the printing process, we are unable to guarantee an exact colour reproduction of these designs. Gaskell Mackay reserve the right to change any of the specifications without prior notice. E.O.E.
© copyright Gaskell Mackay Carpets Ltd 2010.



HERITAGE, BEAUTY, SERVICE

VOGUE - Helix



The design is the copyright of Gaskell Mackay Carpets Ltd. and may not be reproduced without their written permission. Due to the limitations of the printing process, we are unable to guarantee an exact colour reproduction of these designs. Gaskell Mackay reserve the right to change any of the specifications without prior notice. E.O.E.
© copyright Gaskell Mackay Carpets Ltd 2010.



HERITAGE, BEAUTY, SERVICE

VOGUE - Helix

Design ID: 96-MI634

INFINITY DRIFTWOOD
INFINITY DRIFTWOOD
INFINITY BLACK



This print represents 1m x 1m (Scale 1:6)

The design is the copyright of Gaskell Mackay Carpets Ltd. and may not be reproduced without their written permission. Due to the limitations of the printing process, we are unable to guarantee an exact colour reproduction of these designs. Gaskell Mackay reserve the right to change any of the specifications without prior notice. E.O.E.
© copyright Gaskell Mackay Carpets Ltd 2010.



HERITAGE, BEAUTY, SERVICE

VOGUE - Logan



The design is the copyright of Gaskell Mackay Carpets Ltd. and may not be reproduced without their written permission. Due to the limitations of the printing process, we are unable to guarantee an exact colour reproduction of these designs. Gaskell Mackay reserve the right to change any of the specifications without prior notice. E.O.E.
© copyright Gaskell Mackay Carpets Ltd 2010.



HERITAGE, BEAUTY, SERVICE

VOGUE - Logan

Design ID: 4-M3580

INFINITY MOCHA	
INFINITY GREY	
INFINITY DRIFTWOOD	
INFINITY BLACK	



This print represents 1m x 1m (Scale 1:6)

The design is the copyright of Gaskell Mackay Carpets Ltd. and may not be reproduced without their written permission. Due to the limitations of the printing process, we are unable to guarantee an exact colour reproduction of these designs. Gaskell Mackay reserve the right to change any of the specifications without prior notice. E.O.E.
© copyright Gaskell Mackay Carpets Ltd 2010.



HERITAGE, BEAUTY, SERVICE

VOGUE - Morph



The design is the copyright of Gaskell Mackay Carpets Ltd. and may not be reproduced without their written permission. Due to the limitations of the printing process, we are unable to guarantee an exact colour reproduction of these designs. Gaskell Mackay reserve the right to change any of the specifications without prior notice. E.O.E.
© copyright Gaskell Mackay Carpets Ltd 2010.



HERITAGE, BEAUTY, SERVICE

VOGUE - Morph

Design ID: 6-LDI592

INFINITY UMBER	
INFINITY STONE	
INFINITY LINEN	
INFINITY SPICE	



This print represents 1m x 1m (Scale 1:6)

The design is the copyright of Gaskell Mackay Carpets Ltd. and may not be reproduced without their written permission. Due to the limitations of the printing process, we are unable to guarantee an exact colour reproduction of these designs. Gaskell Mackay reserve the right to change any of the specifications without prior notice. E.O.E.
© copyright Gaskell Mackay Carpets Ltd 2010.



HERITAGE, BEAUTY, SERVICE

VOGUE - Nouvelle



The design is the copyright of Gaskell Mackay Carpets Ltd. and may not be reproduced without their written permission. Due to the limitations of the printing process, we are unable to guarantee an exact colour reproduction of these designs. Gaskell Mackay reserve the right to change any of the specifications without prior notice. E.O.E.
© copyright Gaskell Mackay Carpets Ltd 2010.



HERITAGE, BEAUTY, SERVICE

VOGUE - Nouvelle

Design ID: 16-LW0998

INFINITY UMBER	
INFINITY GREY	
INFINITY STONE	
INFINITY LINEN	



This print represents 1m x 1m (Scale 1:6)

The design is the copyright of Gaskell Mackay Carpets Ltd. and may not be reproduced without their written permission. Due to the limitations of the printing process, we are unable to guarantee an exact colour reproduction of these designs. Gaskell Mackay reserve the right to change any of the specifications without prior notice. E.O.E.
© copyright Gaskell Mackay Carpets Ltd 2010.



HERITAGE, BEAUTY, SERVICE

VOGUE - Sketch



The design is the copyright of Gaskell Mackay Carpets Ltd. and may not be reproduced without their written permission. Due to the limitations of the printing process, we are unable to guarantee an exact colour reproduction of these designs. Gaskell Mackay reserve the right to change any of the specifications without prior notice. E.O.E.
© copyright Gaskell Mackay Carpets Ltd 2010.



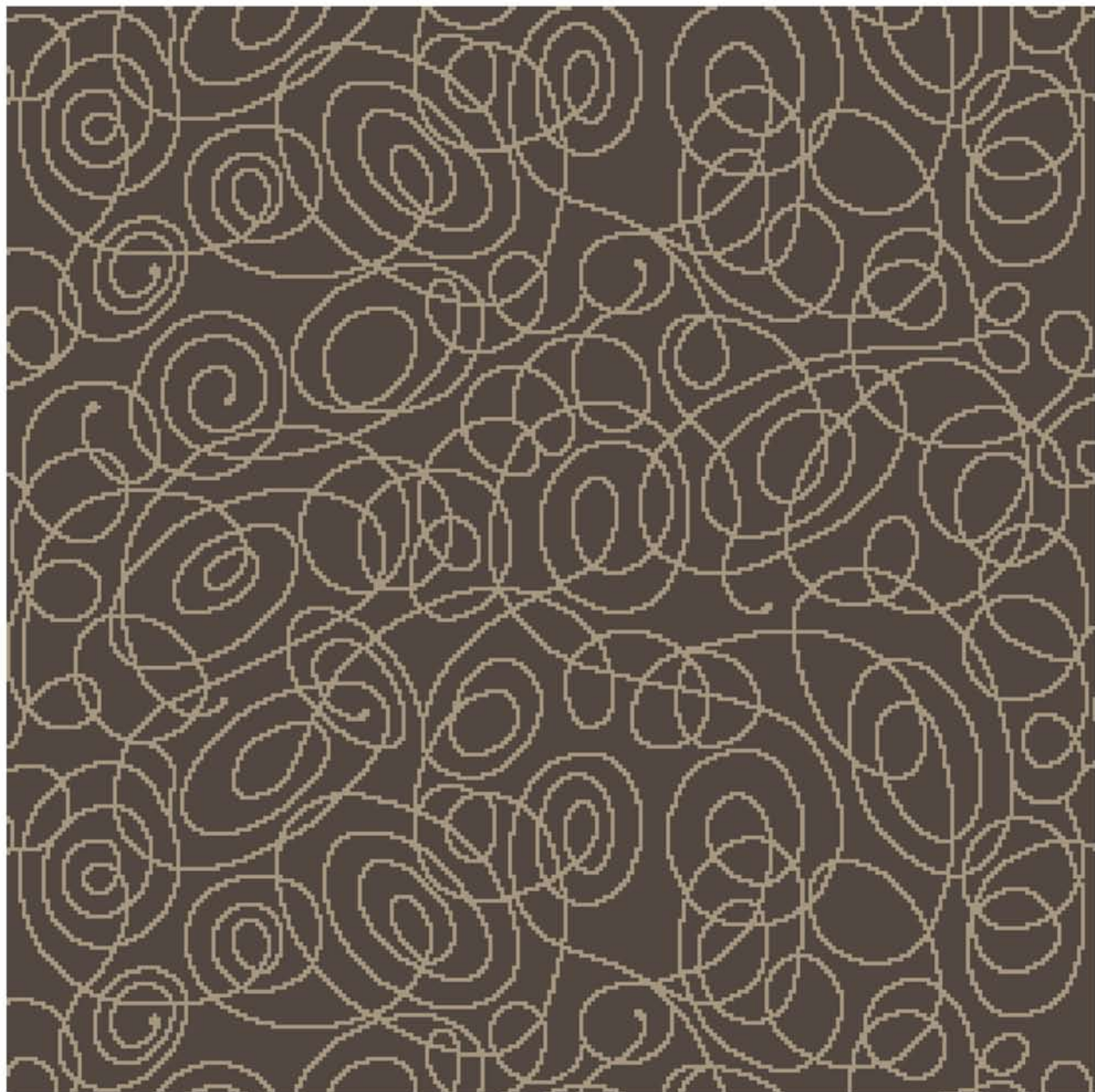
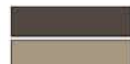
HERITAGE, BEAUTY, SERVICE

VOGUE - Sketch

Design ID: 10-M2124

INFINITY UMBER

INFINITY STONE



This print represents 1m x 1m (Scale 1:6)

The design is the copyright of Gaskell Mackay Carpets Ltd. and may not be reproduced without their written permission. Due to the limitations of the printing process, we are unable to guarantee an exact colour reproduction of these designs. Gaskell Mackay reserve the right to change any of the specifications without prior notice. E.O.E.
© copyright Gaskell Mackay Carpets Ltd 2010.



HERITAGE, BEAUTY, SERVICE

VOGUE - Sophora



The design is the copyright of Gaskell Mackay Carpets Ltd. and may not be reproduced without their written permission. Due to the limitations of the printing process, we are unable to guarantee an exact colour reproduction of these designs. Gaskell Mackay reserve the right to change any of the specifications without prior notice. E.O.E.
© copyright Gaskell Mackay Carpets Ltd 2010.



HERITAGE, BEAUTY, SERVICE

VOGUE - Sophora

Design ID: I-M3617

INFINITY BLACK
INFINITY DRIFTWOOD
INFINITY MOCHA



This print represents 1m x 1m (Scale 1:6)

The design is the copyright of Gaskell Mackay Carpets Ltd. and may not be reproduced without their written permission. Due to the limitations of the printing process, we are unable to guarantee an exact colour reproduction of these designs. Gaskell Mackay reserve the right to change any of the specifications without prior notice. E.O.E.
© copyright Gaskell Mackay Carpets Ltd 2010.



HERITAGE, BEAUTY, SERVICE

VOGUE - Starburst



The design is the copyright of Gaskell Mackay Carpets Ltd. and may not be reproduced without their written permission. Due to the limitations of the printing process, we are unable to guarantee an exact colour reproduction of these designs. Gaskell Mackay reserve the right to change any of the specifications without prior notice. E.O.E.
© copyright Gaskell Mackay Carpets Ltd 2010.

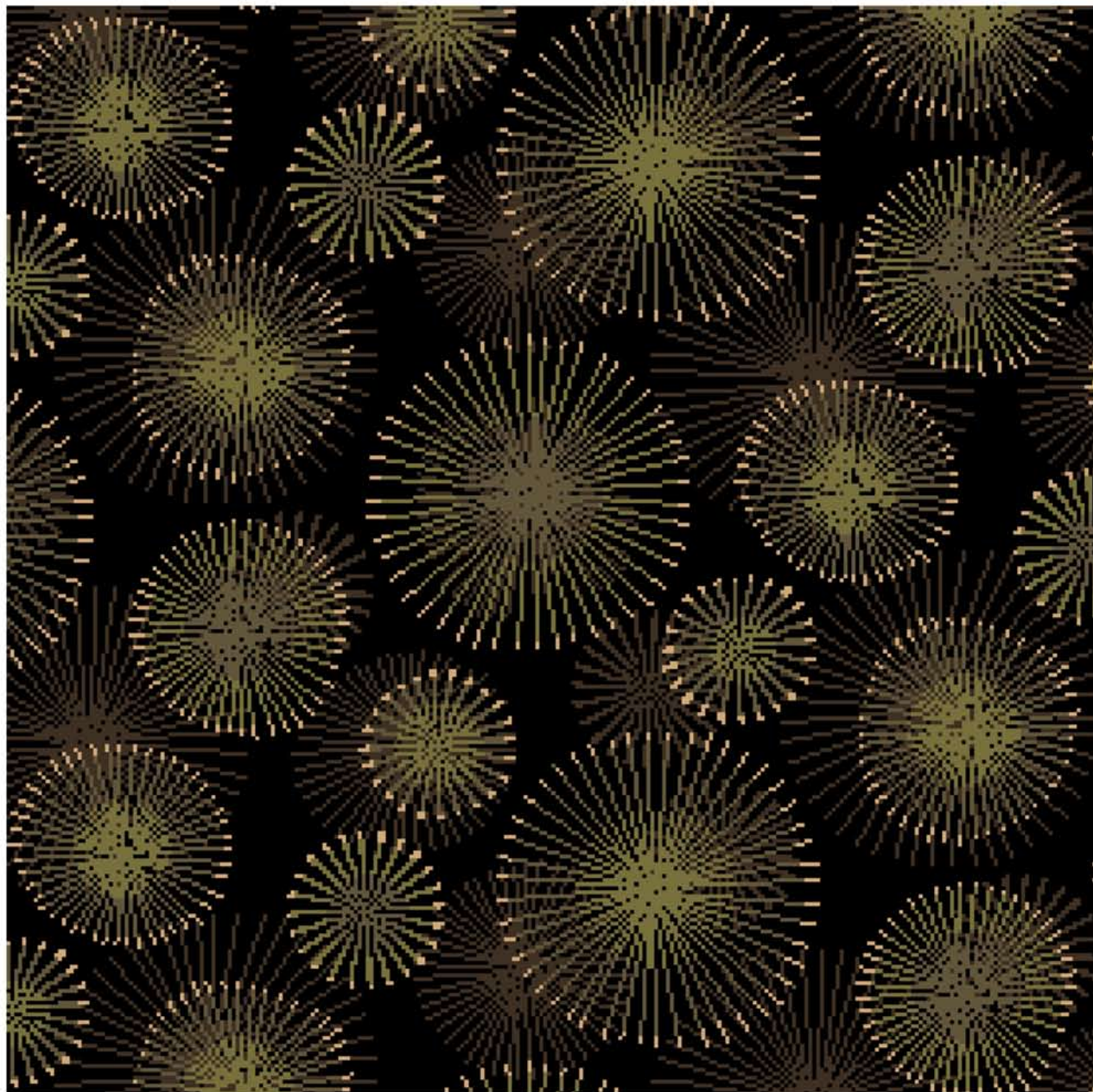


HERITAGE, BEAUTY, SERVICE

VOGUE - Starburst

Design ID: I-LDI852

INFINITY BLACK	
INFINITY MOCHA	
INFINITY DRIFTWOOD	
INFINITY HEMP	
INFINITY SAND	



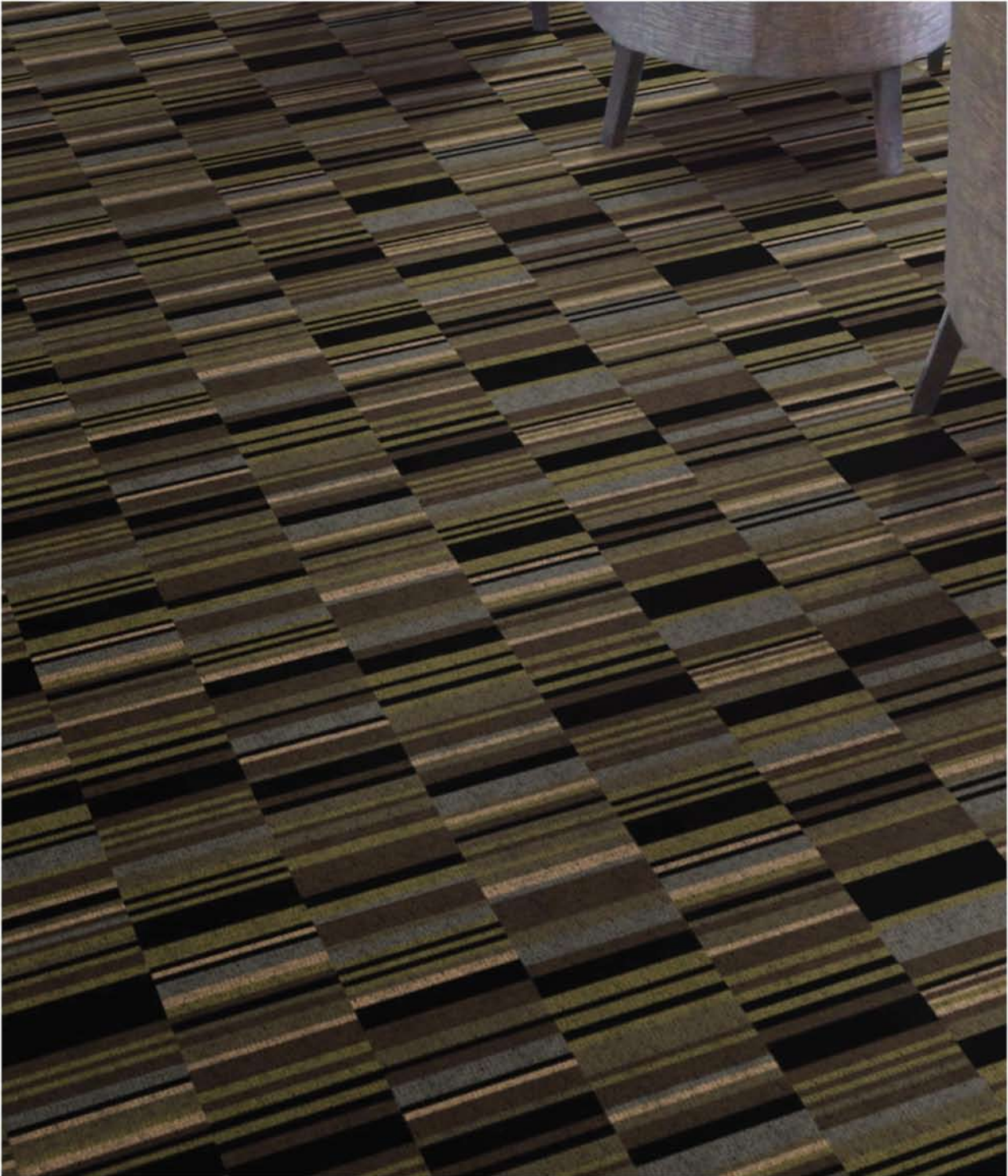
This print represents 1m x 1m (Scale 1:6)

The design is the copyright of Gaskell Mackay Carpets Ltd. and may not be reproduced without their written permission. Due to the limitations of the printing process, we are unable to guarantee an exact colour reproduction of these designs. Gaskell Mackay reserve the right to change any of the specifications without prior notice. E.O.E.
© copyright Gaskell Mackay Carpets Ltd 2010.



HERITAGE, BEAUTY, SERVICE

VOGUE - Tic-Tac



The design is the copyright of Gaskell Mackay Carpets Ltd. and may not be reproduced without their written permission. Due to the limitations of the printing process, we are unable to guarantee an exact colour reproduction of these designs. Gaskell Mackay reserve the right to change any of the specifications without prior notice. E.O.E.
© copyright Gaskell Mackay Carpets Ltd 2010.



HERITAGE, BEAUTY, SERVICE

VOGUE - Tic-Tac

Design ID: I-LDI707

INFINITY MOCHA	
INFINITY BLACK	
INFINITY HEMP	
INFINITY DRIFTWOOD	
INFINITY GREY	
INFINITY SAND	



This print represents 1m x 1m (Scale 1:6)

The design is the copyright of Gaskell Mackay Carpets Ltd. and may not be reproduced without their written permission. Due to the limitations of the printing process, we are unable to guarantee an exact colour reproduction of these designs. Gaskell Mackay reserve the right to change any of the specifications without prior notice. E.O.E.
© copyright Gaskell Mackay Carpets Ltd 2010.



HERITAGE, BEAUTY, SERVICE

SPECIFICATIONS & MAINTENANCE

General Specification Details

Bukhara, Turkey Red, Shiraz

Pitch	7
Rows	7
Pile Yarns	2/42's, 80% Wool / 20% Nylon
Pile Weight	1150g/m ² (34ozs/yd ²)
Width	4.00m (13'1")
Suitability	Heavy Contract

Herati, Inca, Kashmir, Kilim, Soumak designs

Pitch	7
Rows	7
Pile Yarns	2/47's, 80% Wool / 20% Nylon
Pile Weight	1070g/m ² (31.6ozs/yd ²)
Width	4.00m (13'1")
Suitability	Heavy Contract

Samples

Samples of all the designs and colourways illustrated can be produced in the form of "Kibby" carpet samples (to represent colour and design only). These are usually available within 72 hours.

Please note that whilst every effort is made to accurately replicate designs in a Kibby format, this is not fully representative of the finished woven product. Some allowance therefore must be made to take account of the visual differences which may occur depending on the design selected and the quality produced.

Quality Selection

The qualities detailed represent specifications which should satisfy most commercial requirements. With each particular installation, the decision on which quality is most appropriate will depend on the levels of traffic, colour and design as well as the length of time the carpet is expected to be installed.

Gaskell Mackay have many years experience in these considerations and can provide detailed advice on quality selection on a project by project basis.

Planning and Estimation Service

Using the latest Callidus planning software, Gaskell Mackay can accurately estimate carpet requirements from site plans to any scale. Accurate estimations can be calculated and adjustments made to minimise wastage.

One critical area of importance is seam placement. Knowledge of customer flow through the building is used to guide the installer in the careful positioning of seams to avoid premature wear.

General Installation Recommendations

All patterned carpets should be installed in accordance with BSS325 : 2001 Installation of Textile Floorcoverings and NICF Manual detailing industry best practice.

General Maintenance Recommendations

Gaskell Mackay recommend that this carpet is maintained in accordance with an agreed maintenance schedule which should include the following:

- Vacuum regularly
- Remove spills immediately
- Professionally clean as required

Pile Reversal

All cut pile carpets can suffer from pile reversal and in certain instances this may become permanently bent or distorted for no specific reason that research has yet identified, giving areas of light and shade. This is also described as "shading" or "watermarking". It is not a defect in manufacture; it only occurs in a small percentage of all carpets and no liability whatsoever can be accepted by the manufacturer in respect of it.

Pile Pressure

All cut pile carpets are liable to show light and dark patches resulting from disturbance of the pile created by foot traffic or brushing. This is a normal feature and is not a defect in manufacture and no liability whatsoever can be accepted by the manufacturer in respect of it.

The design is copyright of Gaskell Mackay and may not be reproduced without their written permission. Due to the limitations of the printing process, we are unable to guarantee an exact colour reproduction of these designs. Gaskell Mackay reserve the right to change any of these specifications without prior notice. E.O.E.
© Gaskell Mackay Carpets Limited 2010.



whitestone weavers

Whitestone Weavers Ltd
View Logistics, Park View Road East
Hartlepool TS25 1HT
t: +44 (0) 1429 892555
f: +44 (0) 1429 892560
e: sales@whitestone.co.uk
www.whitestone.co.uk



HUGH MACKAY
carpets

Hugh Mackay Carpets
View Logistics, Park View Road East
Hartlepool TS25 1HT
t: +44 (0) 1429 892555
f: +44 (0) 1429 892560
e: sales@hughmackay.co.uk
www.hughmackay.com



Gaskell Mackay Carpets Ltd
View Logistics, Park View Road East
Hartlepool TS25 1HT
t: +44 (0) 1429 892525
f: +44 (0) 1429 892530
e: info@gaskell.co.uk
www.gaskell.co.uk