



THE DESIGNER  
COLLECTION



HUGH MACKAY  

---

carpets





# THE DESIGNER COLLECTION

Representing a new adventure for Hugh Mackay, the introduction of the Designer Collection reflects the very latest trends in Interior styling. Combining beautifully simple design with subtle yet elegant colour combinations this new stock collection incorporating thirty individual items offers the opportunity to add a new dimension and texture to interiors where “plain” has become ordinary.



**HUGH MACKAY**  

---

**carpets**

The design is copyright of Hugh Mackay and may not be reproduced without their written permission.  
Due to the limitations of the printing process, we are unable to guarantee an exact colour reproduction of these designs.  
Hugh Mackay reserve the right to change any of these specifications without prior notice. E.O.E.

© Hugh Mackay 2010.



# BASKET WEAVE



MAPLE  
DESIGN ID: 1-M217378F



DRIFTWOOD  
DESIGN ID: 5-M222878F



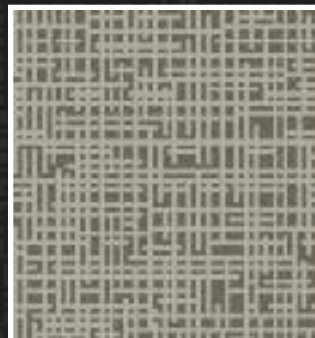
ELM  
DESIGN ID: 9-M217378F



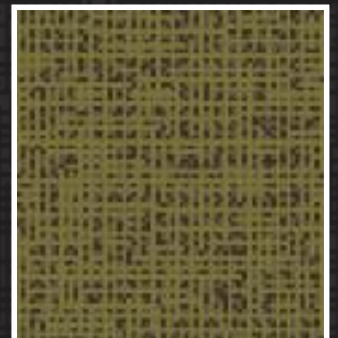
PINE  
DESIGN ID: 17-M222878F



WALNUT  
DESIGN ID: 18-M222878F



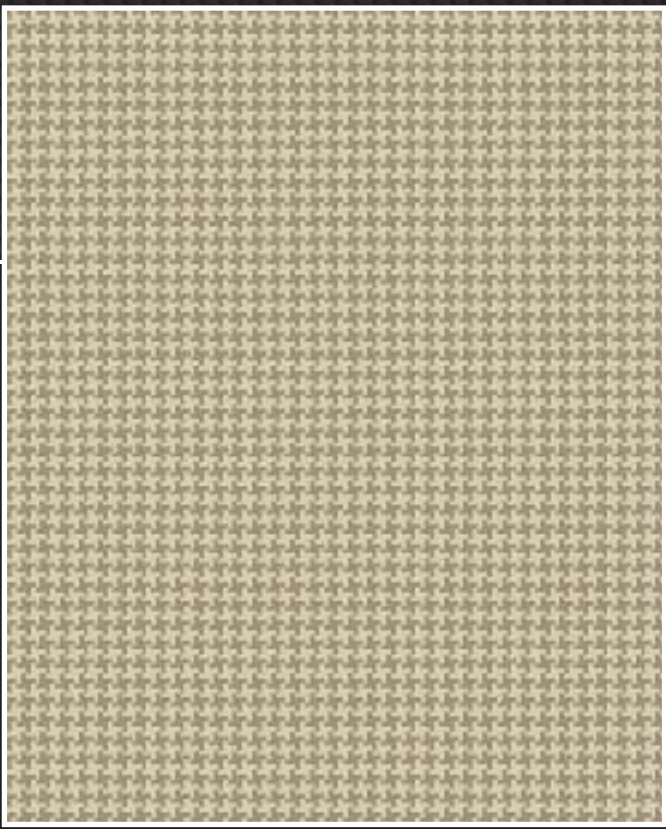
EBONY  
DESIGN ID: 19-M222878F



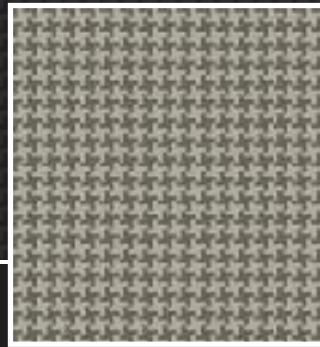
HEMP  
DESIGN ID: 20-M222878F



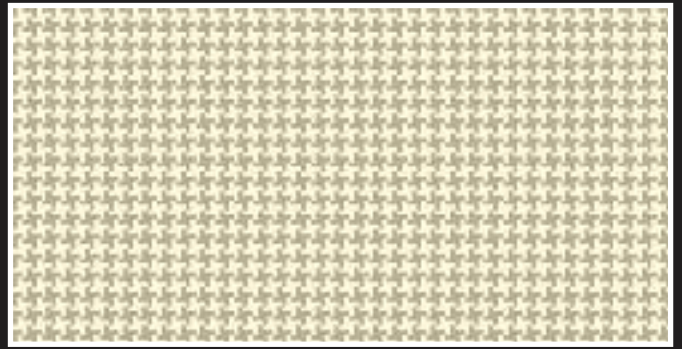
# HOUNDSTOOTH



OAK  
DESIGN ID: 93-G703678F



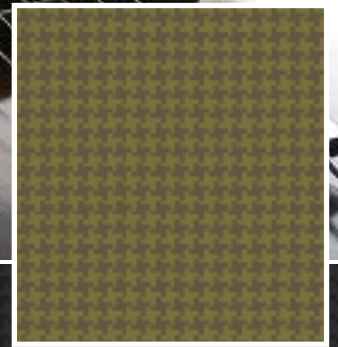
EBONY  
DESIGN ID: 94-G703678F



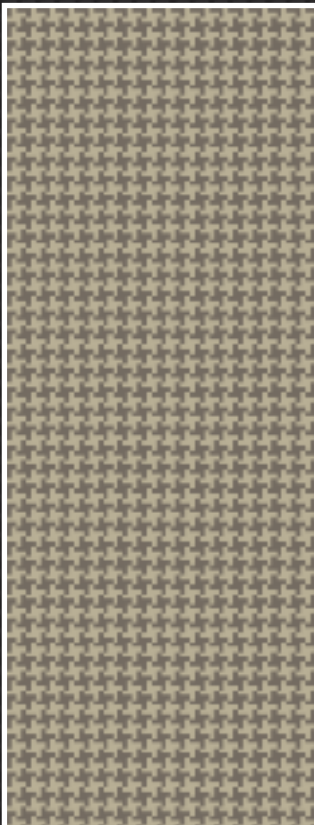
PINE  
DESIGN ID: 96-G703678F



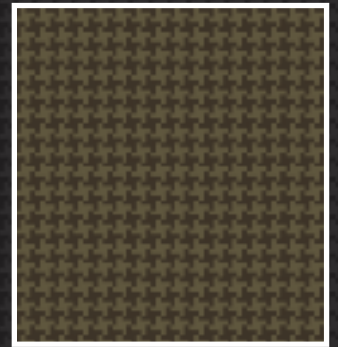
ELM  
DESIGN ID: 95-G703678F



HEMP  
DESIGN ID: 99-G703678F



WALNUT  
DESIGN ID: 97-G703678F



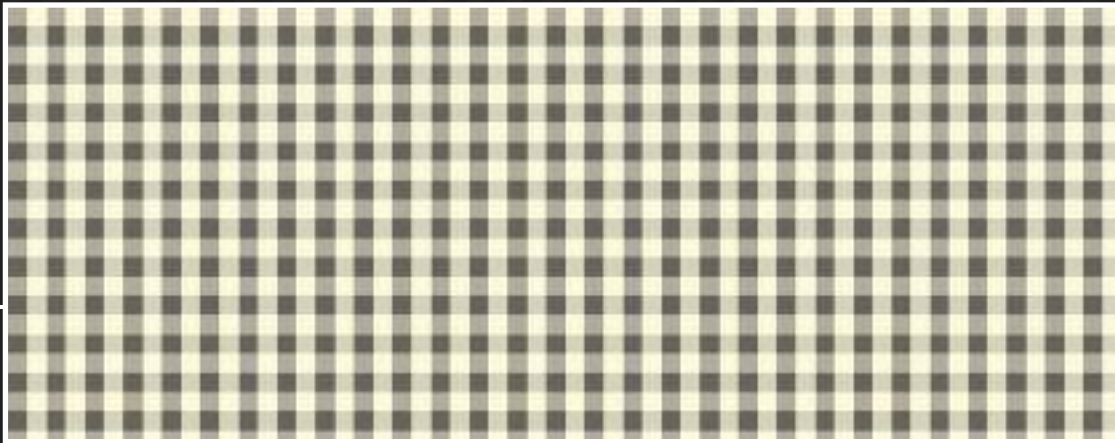
DRIFTWOOD  
DESIGN ID: 100-G703678F



STONE  
DESIGN ID: 98-G703678F



# NEW GINGHAM



ELM  
DESIGN ID: 27-G842678F

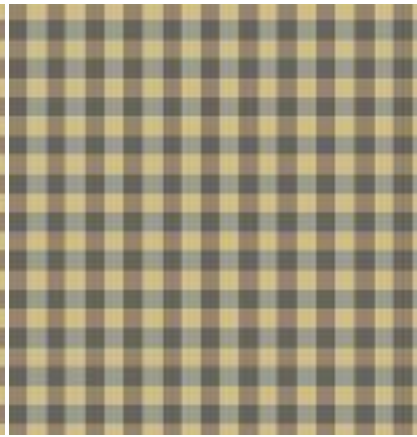


PINE  
DESIGN ID: 28-G842678F

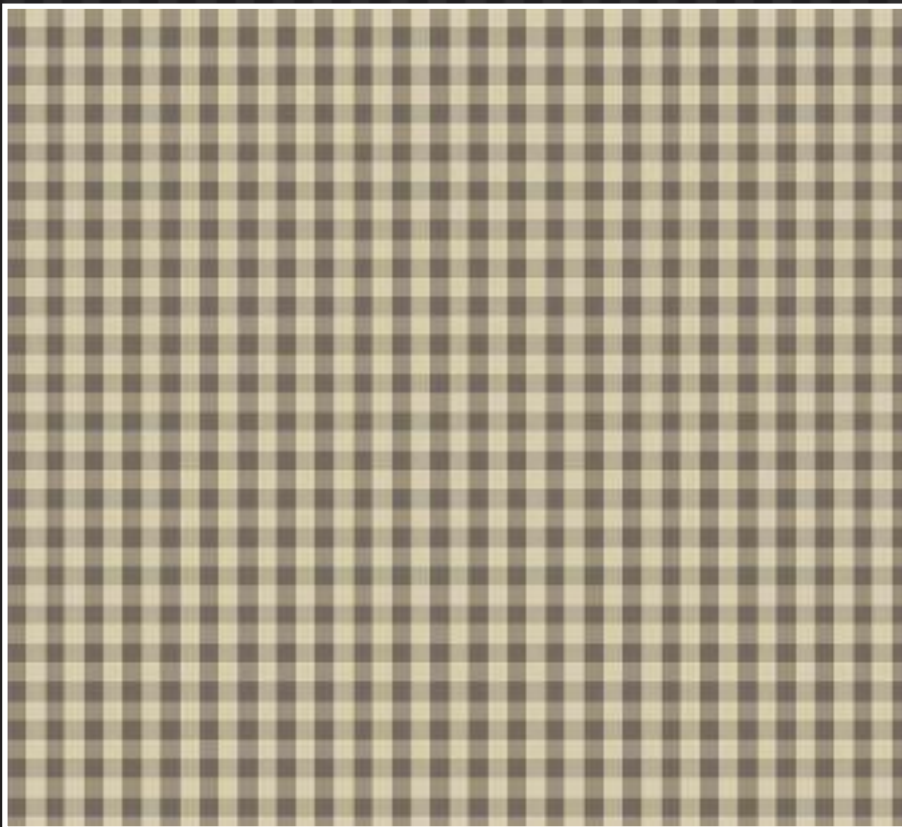




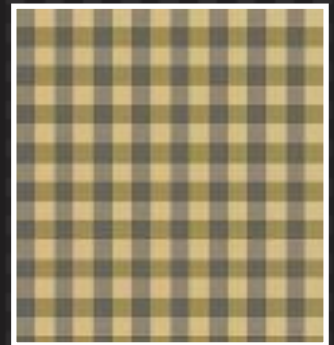
STONE  
DESIGN ID: 30-G842678F



SILVER  
DESIGN ID: 31-G842678F



WALNUT  
DESIGN ID: 29-G842678F

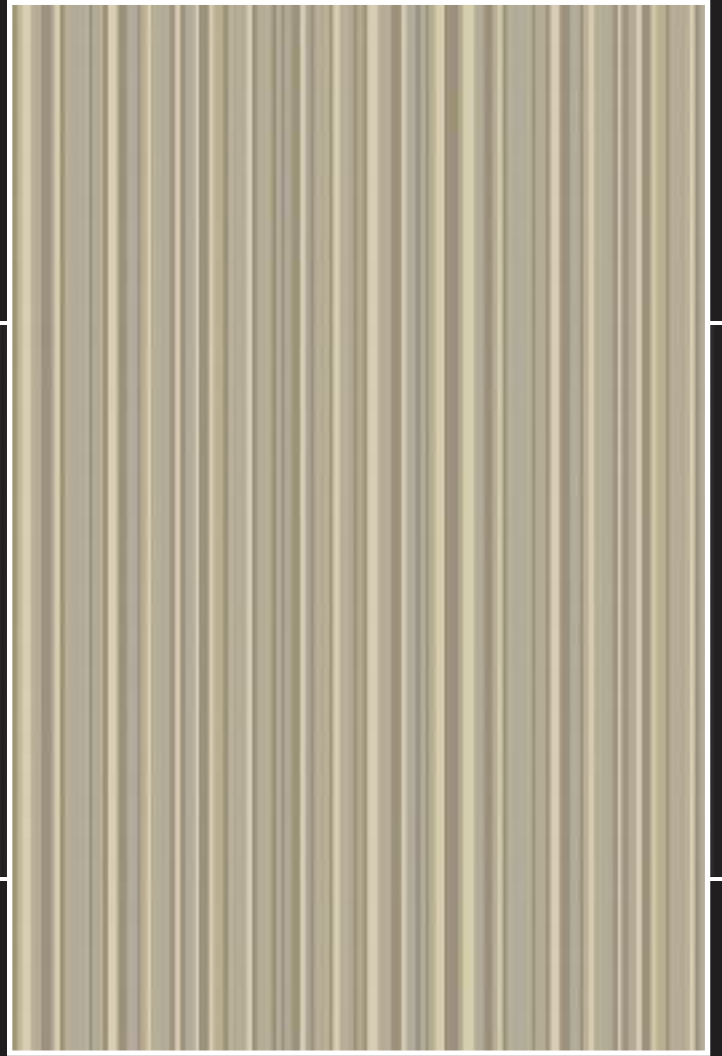


STRAW  
DESIGN ID: 32-G842678F



DRIFTWOOD  
DESIGN ID: 33-G842678F

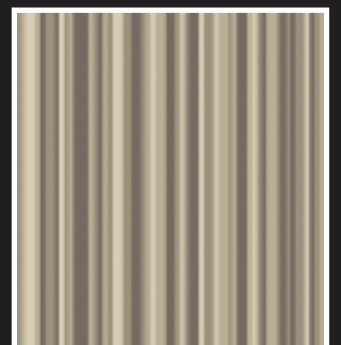
# STRATA



ELM  
DESIGN ID: I-M106378F

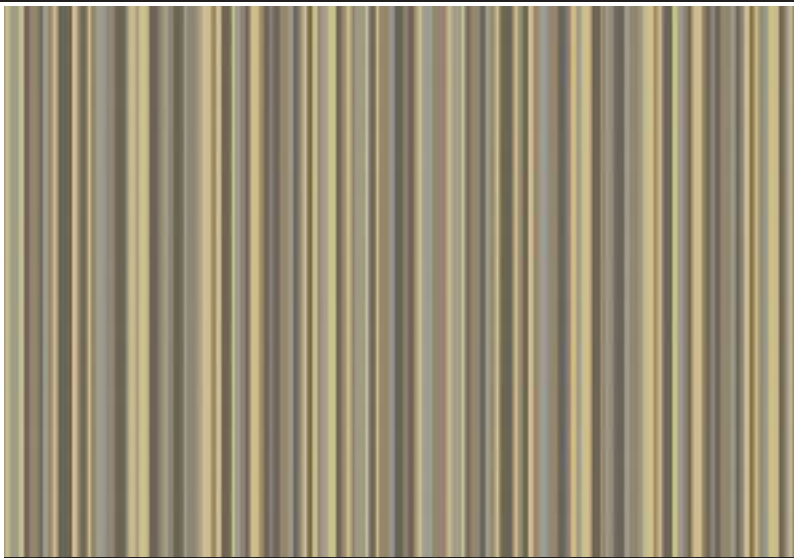


PINE  
DESIGN ID: I-M106478F



WALNUT  
DESIGN ID: I-M106578F

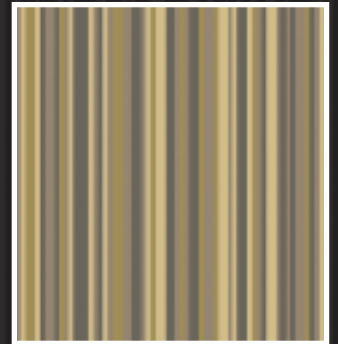




SILVER  
DESIGN ID: 3-M106378F



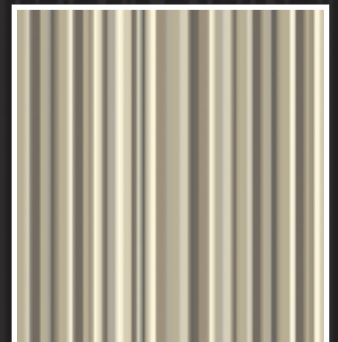
STONE  
DESIGN ID: 4-M106378F



STRAW  
DESIGN ID: 5-M106378F



DRIFTWOOD  
DESIGN ID: 6-M106378F



OAK  
DESIGN ID: 7-M106378F

# SPECIFICATIONS & MAINTENANCE

## General Specification Details

Hondstooth (Walnut, Pine, Elm, Ebony, Oak)  
New Gingham (Elm, Pine, Walnut)  
Basket Weave (Ebony, Elm, Walnut, Pine, Maple)  
Strata (Pine, Elm, Oak, Walnut)

Pitch	7
Rows	8
Pile Yarns	2/47's, 100% Undyed Wool
Pile Weight	1260g/m <sup>2</sup> (37.2ozs yd <sup>2</sup> )
Width	4.00m (13'1")
Suitability	Extra Heavy Contract

Hondstooth (Driftwood, Hemp, Stone)  
New Gingham (Driftwood, Stone, Straw, Silver)  
Basket Weave (Driftwood, Hemp)  
Strata (Driftwood, Stone, Straw, Silver)

Pitch	7
Rows	8
Pile Yarns	2/42's, 80% Wool / 20% Nylon
Pile Weight	1310g/m <sup>2</sup> (38.6ozs yd <sup>2</sup> )
Width	4.00m (13'1")
Suitability	Extra Heavy Contract

## Samples

Samples of all the designs and colourways illustrated can be produced in the form of "Kibby" carpet samples (to represent colour and design only). These are usually available within 72 hours.

Please note that whilst every effort is made to accurately replicate designs in a Kibby format, this is not fully representative of the finished woven product. Some allowance therefore must be made to take account of the visual differences which may occur depending on the design selected and the quality produced.

## Quality Selection

The qualities detailed represent specifications which should satisfy most commercial requirements. With each particular installation, the decision on which quality is most appropriate will depend on the levels of traffic, colour and design as well as the length of time the carpet is expected to be installed.

We have many years experience in these considerations and can provide detailed advice on quality selection on a project by project basis.

## Planning and Estimation Service

Using the latest Callidus planning software, Hugh Mackay can accurately estimate carpet requirements from site plans to any scale. Accurate estimations can be calculated and adjustments made to minimise wastage.

One critical area of importance is seam placement. Knowledge of customer flow through the building is used to guide the installer in the careful positioning of seams to avoid premature wear.

## General Installation Recommendations

All patterned carpets should be installed in accordance with BS5325 : 2001 Installation of Textile Floorcoverings and NICF Manual detailing industry best practice.

## General Maintenance Recommendations

Hugh Mackay Carpets recommend that this carpet is maintained in accordance with an agreed maintenance schedule which should include the following:

- Vacuum regularly
- Remove spills immediately
- Professionally clean as required

## Pile Reversal

All cut pile carpets can suffer from pile reversal and in certain instances this may become permanently bent or distorted for no specific reason that research has yet identified, giving areas of light and shade. This is also described as "shading" or "watermarking". It is not a defect in manufacture; it only occurs in a small percentage of all carpets and no liability whatsoever can be accepted by the manufacturer in respect of it.

## Pile Pressure

All cut pile carpets are liable to show light and dark patches resulting from disturbance of the pile created by foot traffic or brushing. This is a normal feature and is not a defect in manufacture and no liability whatsoever can be accepted by the manufacturer in respect of it.