

PRINCE BISHOP CROWN & SCEPTRE COLLECTION



*An exciting collection of genuine Woven Axminster
in three contemporary designs, with an expansive
colour palette to suit all tastes*

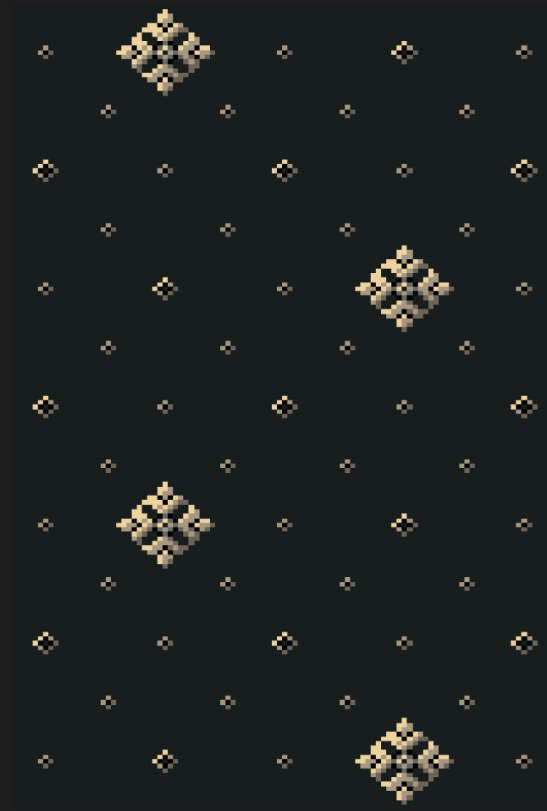


HUGH MACKAY
carpets

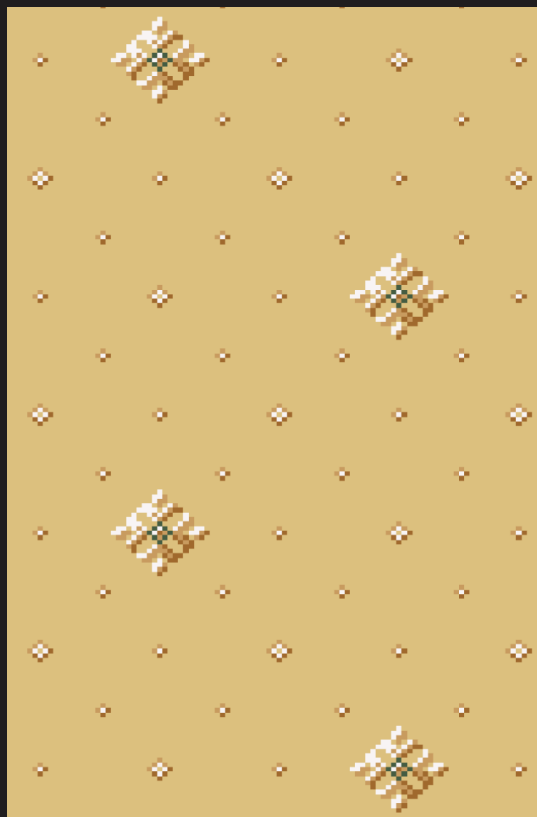
www.hughmackay.com



52-M041678F Crown Anthracite 0.33m x 0.33m - self match



52-M041678F Crown Anthracite 0.33m x 0.33m - self match



M041778F Crown Beige 0.33m x 0.33m - self match

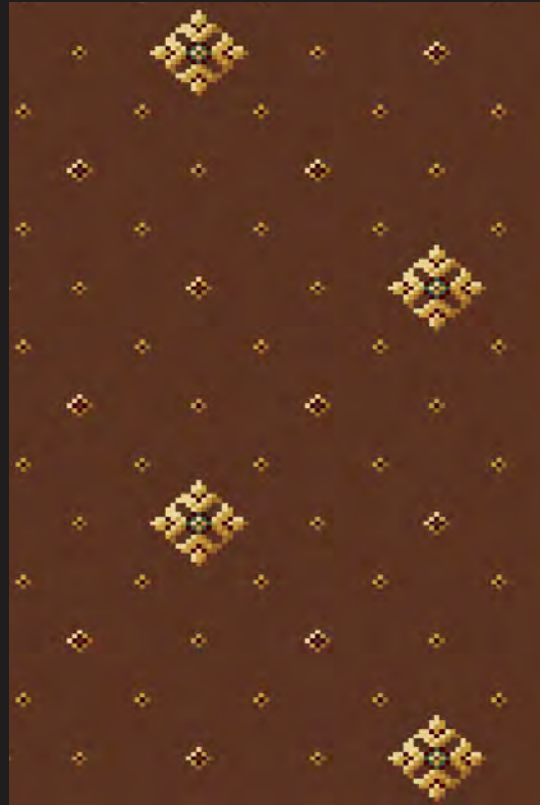


M041778F Crown Beige 0.33m x 0.33m - self match

ONLINE STOCK CHECK, ORDERING & TRACKING



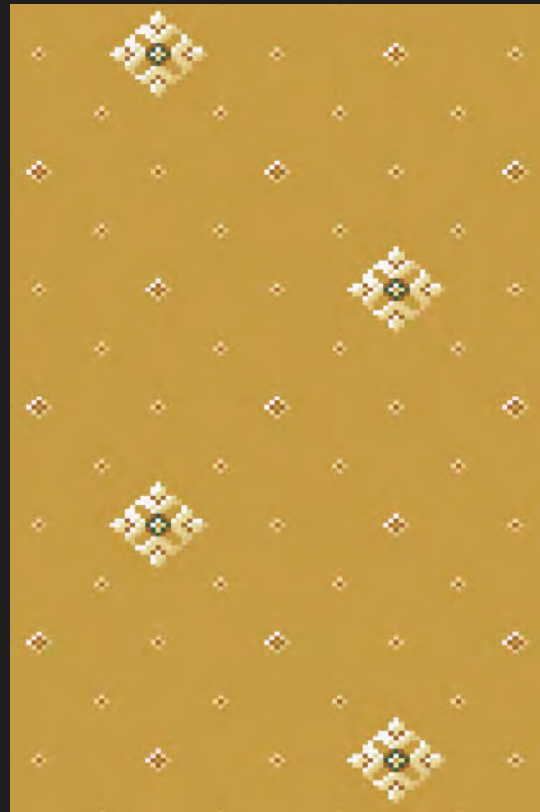
M041178F Crown Brown 0.33m x 0.33m - self match



M041178F Crown Brown 0.33m x 0.33m - self match



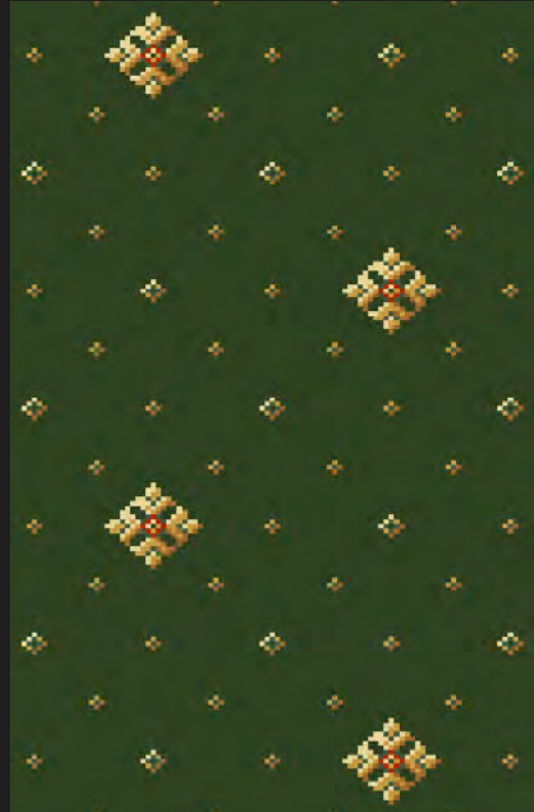
51-M041678F Crown Cinnamon 0.33m x 0.33m - self match



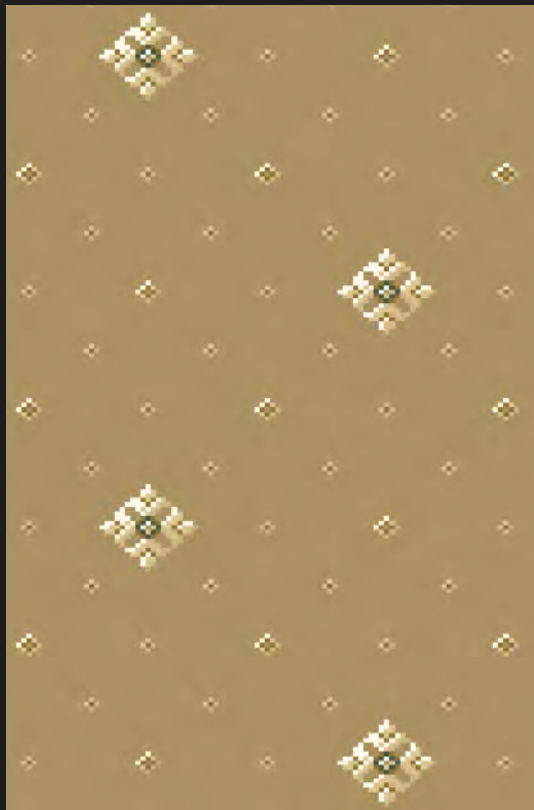
M041578F Crown Corn 0.33m x 0.33m - self match



M041278F Crown Dark Green 0.33m x 0.33m - self match



M041278F Crown Dark Green 0.33m x 0.33m - self match



M041678F Crown Mink 0.33m x 0.33m - self match

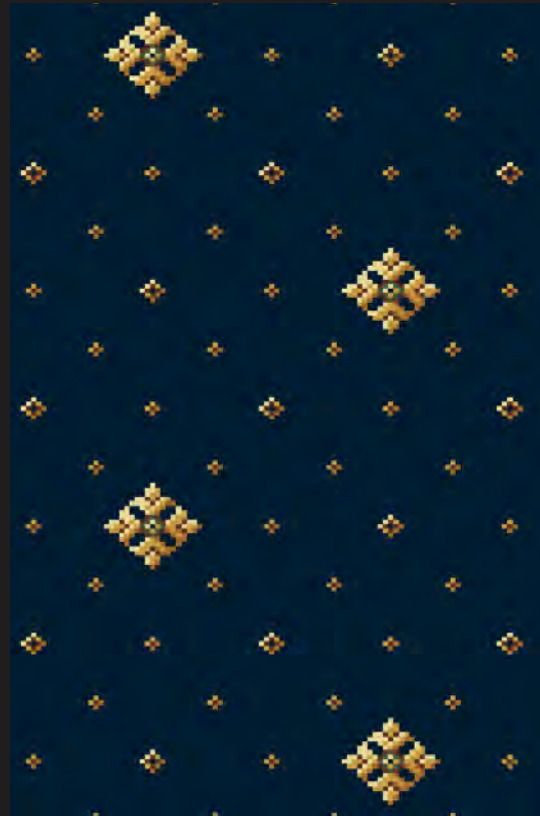


M041678F Crown Mink 0.33m x 0.33m - self match

SPECIFICATIONS & MAINTENANCE ONLINE STOCK CHECK, ORDERING & TRACKING



M040778F Crown Navy 0.33m x 0.33m - self match



M040778F Crown Navy 0.33m x 0.33m - self match



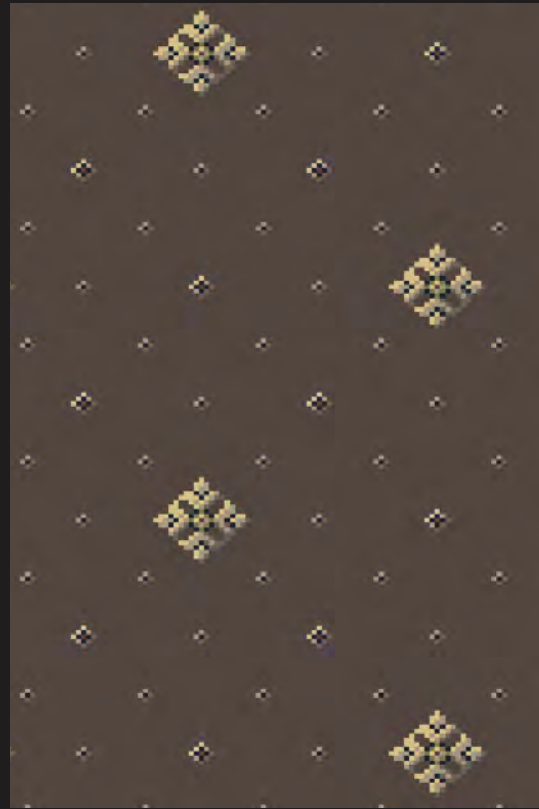
50-M041678F Crown Steel 0.33m x 0.33m - self match



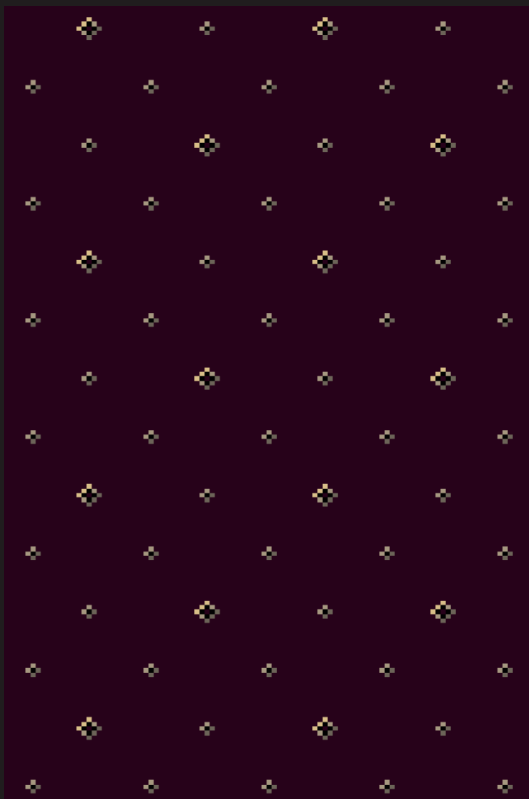
50-M041678F Crown Steel 0.33m x 0.33m - self match



25-M041678F Crown Umber 0.33m x 0.33m - self match



25-M041678F Crown Umber 0.33m x 0.33m - self match



8-M042978F Sceptre Aphrodite 0.165m x 0.167m - self match

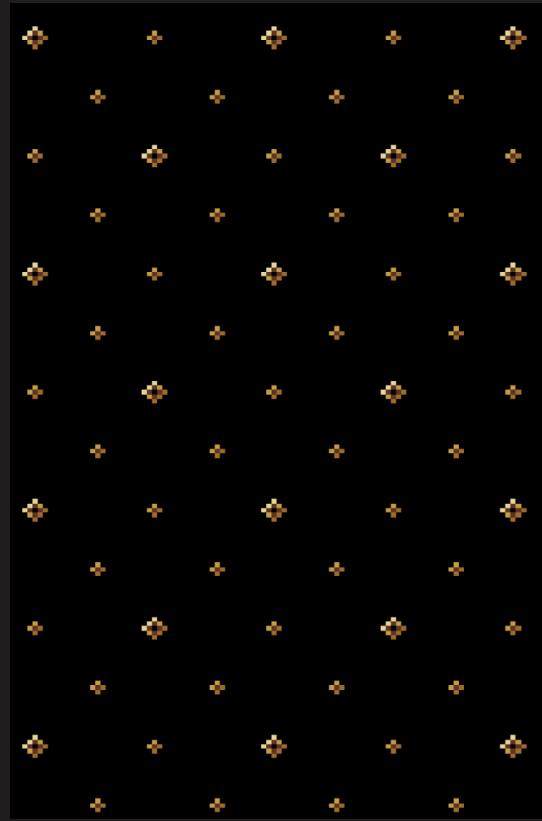


8-M042978F Sceptre Aphrodite 0.165m x 0.167m - self match

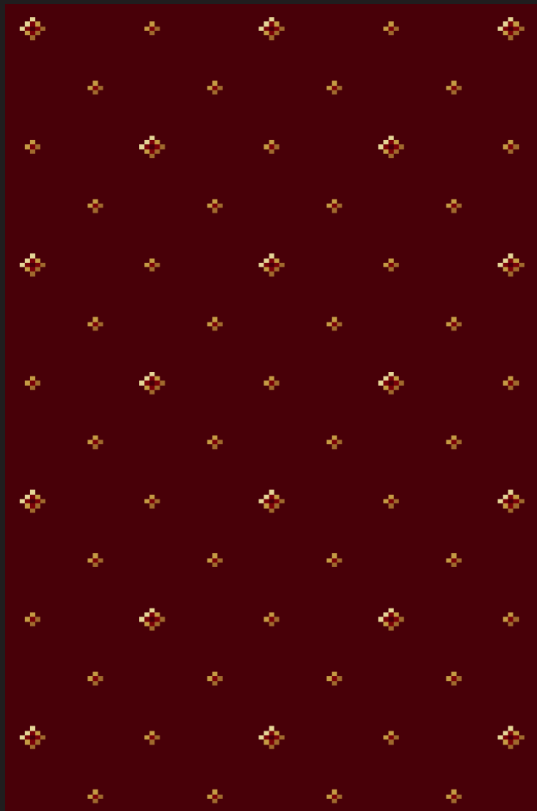
ONLINE STOCK CHECK, ORDERING & TRACKING



M041978F Sceptre Black 0.165m x 0.167m - self match



M041978F Sceptre Black 0.165m x 0.167m - self match



M042178F Sceptre Burgundy 0.165m x 0.167m - self match



M042178F Sceptre Burgundy 0.165m x 0.167m - self match



9-M042978F Sceptre Cobalt 0.165m x 0.167m - self match



9-M042978F Sceptre Cobalt 0.165m x 0.167m - self match



M042778F Sceptre Dark Gold 0.165m x 0.167m - self match



M042778F Sceptre Dark Gold 0.165m x 0.167m - self match

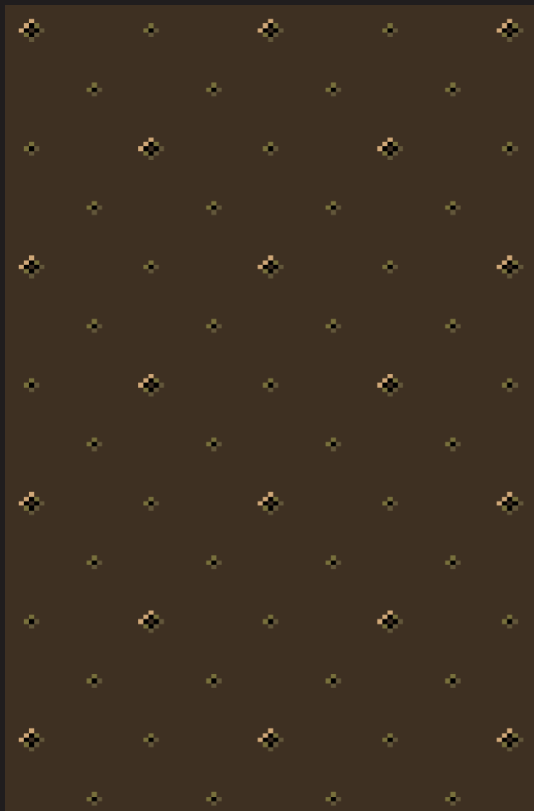
ONLINE STOCK CHECK, ORDERING & TRACKING



4-M042978F Sceptre Grey 0.165m x 0.167m - self match



4-M042978F Sceptre Grey 0.165m x 0.167m - self match



3-M042978F Sceptre Mocha 0.165m x 0.167m - self match



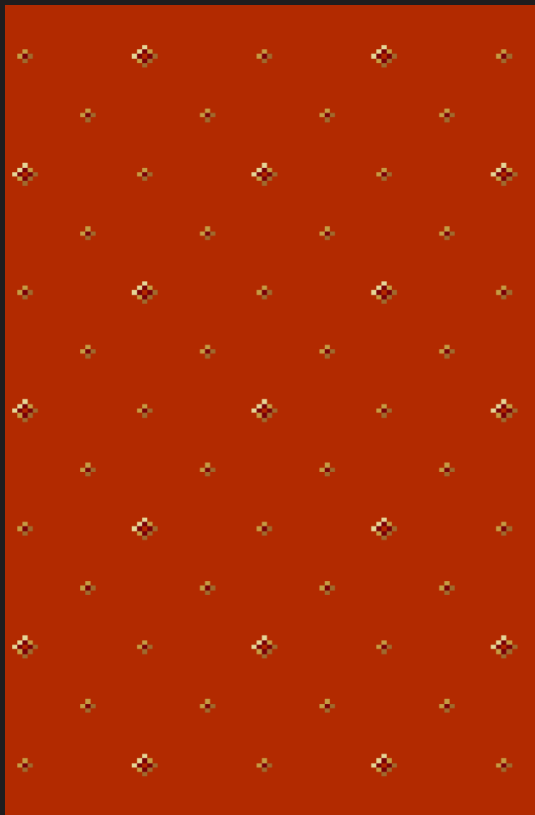
3-M042978F Sceptre Mocha 0.165m x 0.167m - self match



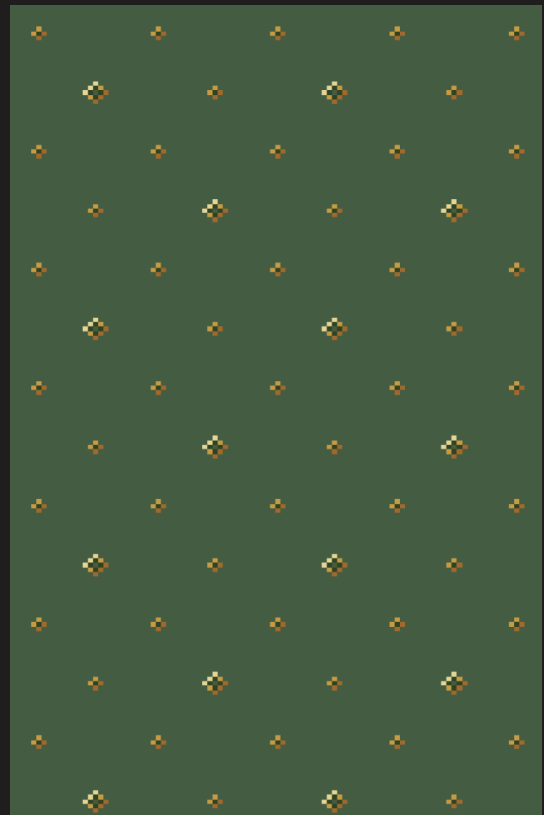
M042278F Sceptre Red 0.165m x 0.167m - self match



M042278F Sceptre Red 0.165m x 0.167m - self match



M042378F Sceptre Terracotta 0.165m x 0.167m - self match



M042678F Sceptre Willow 0.165m x 0.167m - self match

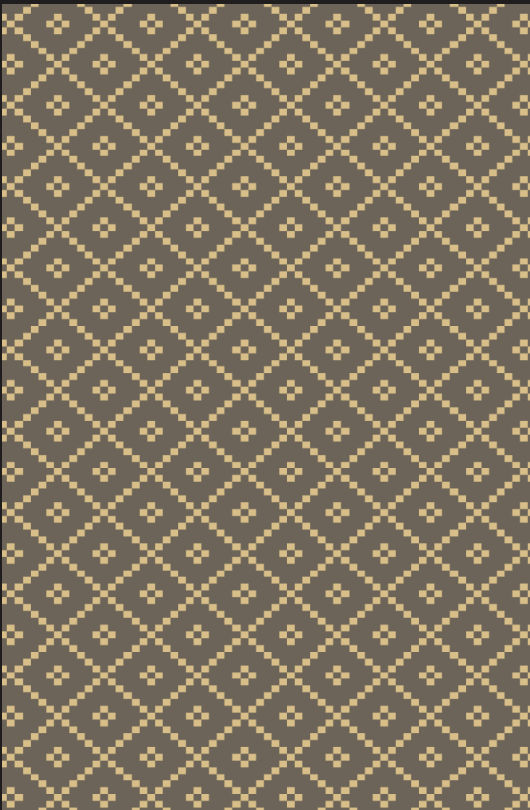
SPECIFICATIONS & MAINTENANCE ONLINE STOCK CHECK, ORDERING & TRACKING



59-M239478F Trellis Cinnamon 0.038m x 0.044m - self match



59-M239478F Trellis Cinnamon 0.038m x 0.044m - self match



27-M239478F Trellis Grey 0.038m x 0.044m - self match



27-M239478F Trellis Grey 0.038m x 0.044m - self match

SPECIFICATIONS & MAINTENANCE

General Specification Details

Prince Bishop

Pitch	7
Rows	8
Pile Yarns	2/47's, 80% Wool / 20% Nylon
Pile Weight	1225g/m ² (36.1 ozs yd ²)
Width	4.00m (13' 1")
Suitability	Extra Heavy Domestic Heavy Contract Class 33: Heavy Commercial Use

Samples

Samples of all the designs and colourways illustrated can be produced in the form of "Kibby" carpet samples (to represent colour and design only). These are usually available within 72 hours.

Please note that whilst every effort is made to accurately replicate designs in a Kibby format, this is not fully representative of the finished woven product. Some allowance therefore must be made to take account of the visual differences which may occur depending on the design selected and the quality produced.

Quality Selection

The qualities detailed represent specifications which should satisfy most commercial requirements. With each particular installation, the decision on which quality is most appropriate will depend on the levels of traffic, colour and design as well as the length of time the carpet is expected to be installed. Hugh Mackay have many years experience in these considerations and can provide detailed advice on quality selection on a project by project basis.

Planning and Estimation Service

Using the latest Callidus planning software, Hugh Mackay can accurately estimate carpet requirements from site plans to any scale. Accurate estimations can be calculated and adjustments made to minimise wastage.

One critical area of importance is seam placement. Knowledge of customer flow through the building is used to guide the installer in the careful positioning of seams to avoid premature wear.

General Installation Recommendations

All patterned carpets should be installed in accordance with BS5325 : 2001 Installation of Textile Floorcoverings and NICF Manual detailing industry best practice.

General Maintenance Recommendations

Hugh Mackay recommend that this carpet is maintained in accordance with an agreed maintenance schedule which should include the following:

- Vacuum regularly
- Remove spills immediately
- Professionally clean as required

Pile Reversal

All cut pile carpets can suffer from pile reversal and in certain instances this may become permanently bent or distorted for no specific reason that research has yet identified, giving areas of light and shade. This is also described as "shading" or "watermarking". It is not a defect in manufacture; it only occurs in a small percentage of all carpets and no liability whatsoever can be accepted by the manufacturer in respect of it.

Pile Pressure

All cut pile carpets are liable to show light and dark patches resulting from disturbance of the pile created by foot traffic or brushing. This is a normal feature and is not a defect in manufacture and no liability whatsoever can be accepted by the manufacturer in respect of it.

The design is copyright of Hugh Mackay and may not be reproduced without their written permission. Due to the limitations of the printing process, we are unable to guarantee an exact colour reproduction of these designs. Hugh Mackay reserve the right to change any of these specifications without prior notice. E.O.E.

© Hugh Mackay Ltd 2010.



Whitestone Weavers Ltd
View Logistics, Park View Road East
Hartlepool TS25 1HT
t: +44 (0) 1429 892555
f: +44 (0) 1429 892560
e: sales@whitestone.co.uk
www.whitestone.co.uk



Hugh Mackay Carpets
View Logistics, Park View Road East
Hartlepool TS25 1HT
t: +44 (0) 1429 892555
f: +44 (0) 1429 892560
e: sales@hughmackay.co.uk
www.hughmackay.com



Gaskell Mackay Carpets Ltd
View Logistics, Park View Road East
Hartlepool TS25 1HT
t: +44 (0) 1429 892525
f: +44 (0) 1429 892530
e: info@gaskell.co.uk
www.gaskell.co.uk